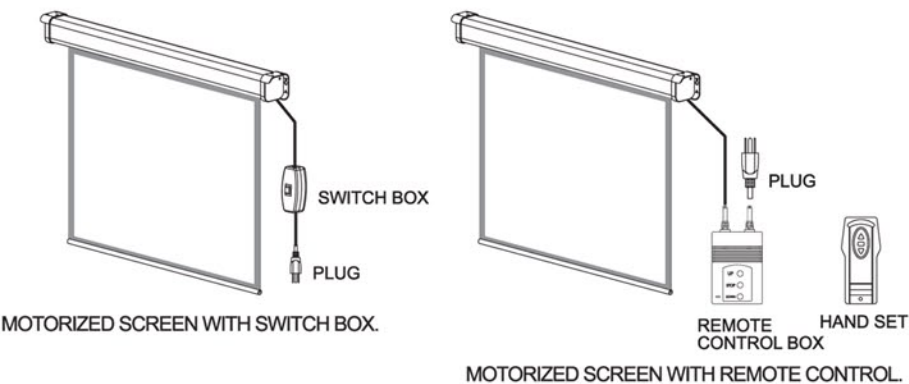


Thank you for choosing our screen.

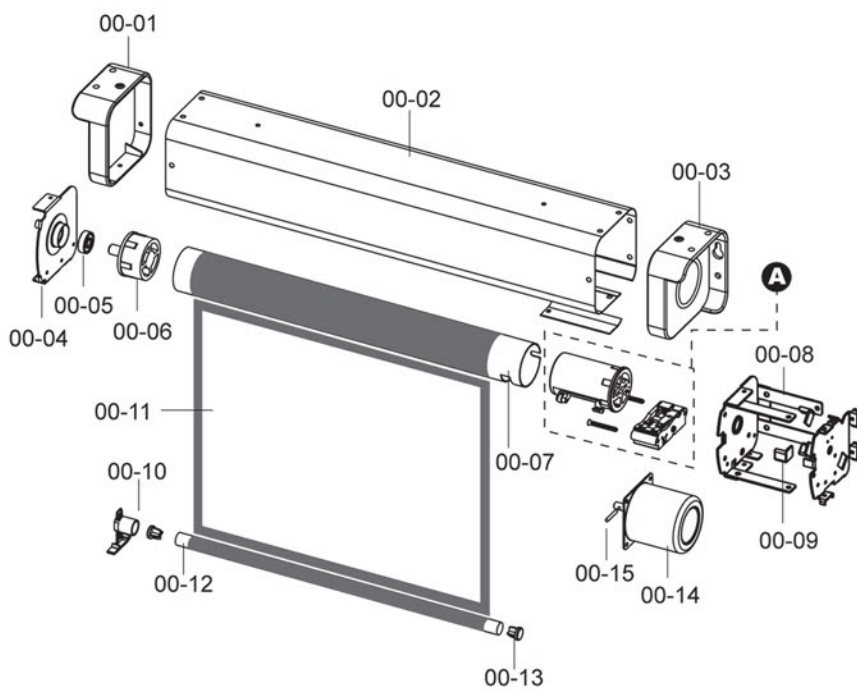
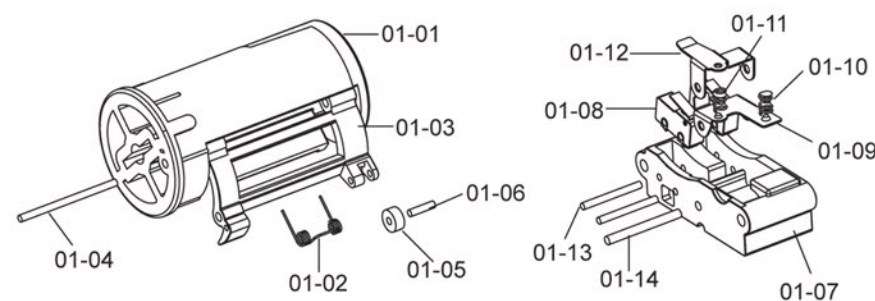
Read this manual carefully to ensure proper usage, you may also find the solution if you have problems.

IMPORTANT ATTENTION the installation of the screen, the electric connections, the setting of the limit switches, must be made from trained engineer only.

THE SHAPE OF SCREEN



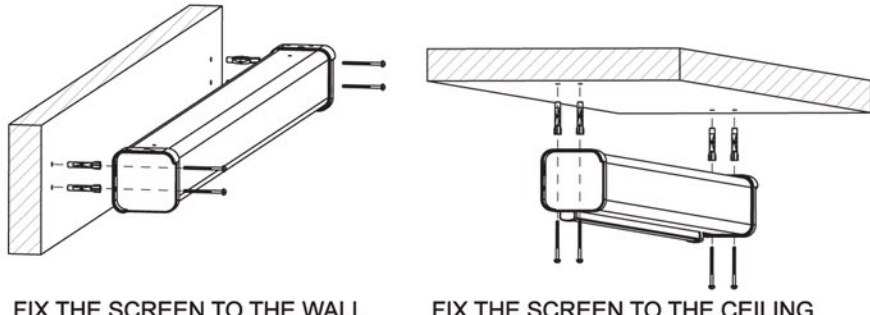
SPARE PARTS LIST FOR MOTORIZED SCREEN



00-01	LEFT END CAP	01-01	ROLLER ROTOR
00-02	SCREEN HOUSING	01-02	SPRING
00-03	RIGHT END CAP	01-03	OSCILLATING LEVER
00-04	BEARING MOUNTING	01-04	SHAFT
00-05	BEARING	01-05	IDLER WHEEL
00-06	ROLLER END CAP	01-06	IDLER WHEEL SHAFT
00-07	ROLLER	01-07	RIGHT ORIENTING MOUNT
00-08	MOTOR HOLDER	01-08	LIMIT SWITCH
00-09	ABSORBER COVER	01-09	UPPER-FRAME
00-10	BLOCK	01-10	SPRING 1
00-11	SCREEN FABRIC	01-11	SPRING 2
00-12	PULL BAR	01-12	SHIFTER LEVER
00-13	RUBBER END CAP	01-13	FIXING SLAT
00-14	SYNCHRONOUS MOTOR	01-14	FIXING SLAT
00-15	LATCH		

INSTALLATION INSTRUCTION

- Unpack the screen carefully, be sure the screen is in good condition, check all the accessories are packed inside the carton.
- Check the voltage and frequency marked on the screen is in accordance with the local power supply. It is suggested only to use the screens indoor under normal temperature and humidity.
- Refer the fig below to fix the screen to the wall or to the ceiling.



VOLTAGE AND FREQUENCY

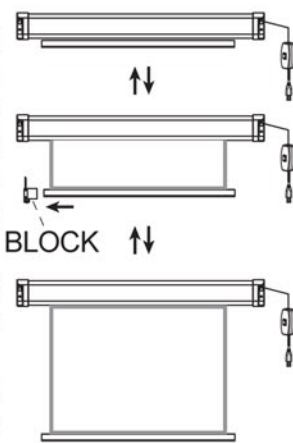
Choose the voltage according to the local requirement: 110V/60Hz or 220V/50Hz.

INSTALLATION NOTE

- Must be installed from direct sunlight.
- Proper ventilation place.
- Proper dampness.
- Clear place.
- Avoid violent jarring.
- Avoid the direct air current from air-condition, heater etc. Do not expose the screen in the High or Low temperature condition.

OPERATION INSTRUCTION

- Please take the block off before your use.
- Plug in the power supply. Press the down button of the switch box or the hand set, the screen will go down smoothly. Press the stop button when the screen goes down to the expected position, otherwise the screen will stop at the lower limited position automatically.
- Screen stop, but the screen size does not meet the right black borders, pull down the middle part of the slat bar smoothly and slowly.
- Press the up button of the switch or the hand set, the screen will go up smoothly. Press the stop button when the screen goes up to the expected position, otherwise the screen will roll back to the housing.



THE ATTENTION

- It's no good for over-operating screen which will break the useful life of screen.
- Do not pull the control wires which avoid disconnection and dangers.
- Keep the good connection of plug and power.
- Cut off the power supply when the screen won't be used for long time.

TROUBLE SHOOT

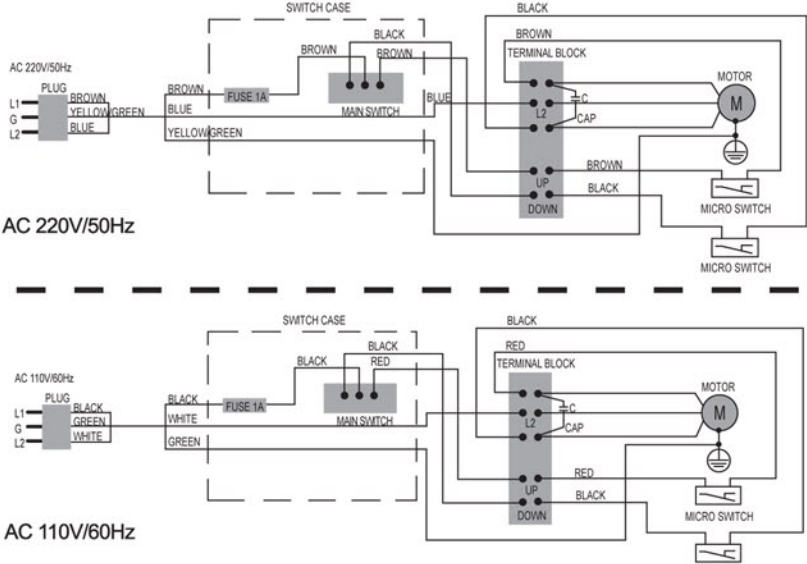
Always call qualified engineer for maintenance to avoid dangers. Always unplug the power supply first before disassemble the screen.

- Check power whether or not is provided.
- Check the fuse whether or not is broken.
- Check wire connection

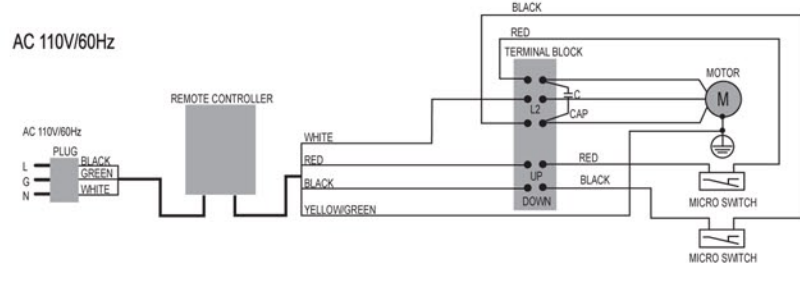
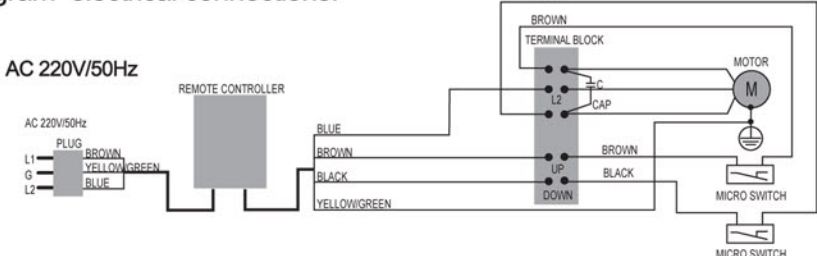
- If remote control does not work well, please check the battery and replace new one.

ELECTRIC CONNECTION

If your motorized screen with switch control, please refer the below diagram electrical connections.



If your motorized screen with remote control, please refer the below diagram electrical connections.

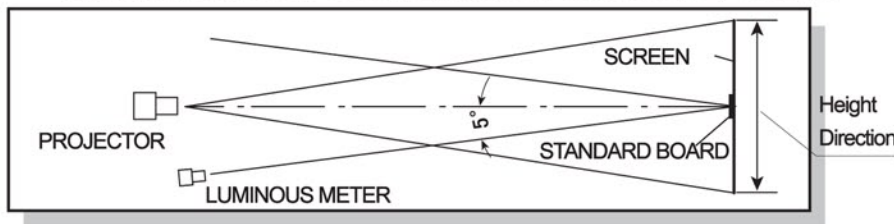


TECHNICAL DATA FOR FABRIC

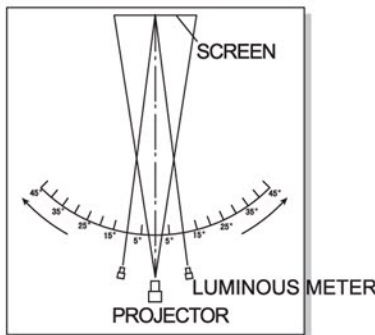
- Matte White Screen
Gain: 0.92
Viewing Angle: >160°
High color rendering, high resolution.
- Glass Beaded Screen
Gain: 2.4
Viewing Angle: >32°
High color rendering, high resolution.

HOW TO MEASURE THE TECHNICAL DATA OF REFLEX SCREEN

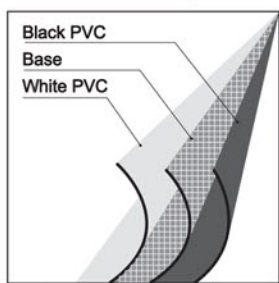
- Gain Measurement: refer the fig below
Standard: JB/T8389 issued by Ministry of Machinery Industry



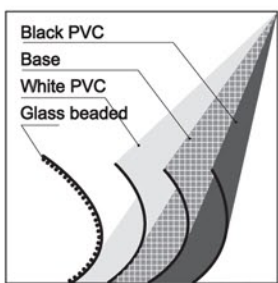
- Viewing Angle Measurement: refer the fig below
Standard: JB/T8389 issued by Ministry of Machinery Industry



SCREEN FABRIC



MATTE WHITE SCREEN SURFACE



GLASS BEADED SCREEN SURFACE

